

How the Shutdowns Affected Student Performance

Jody Underwood, Ph.D.

School District Governance Association



A little
about
me...

Croydon School Board 2010-2023

Doctorate in Education
Learning Scientist, Retired

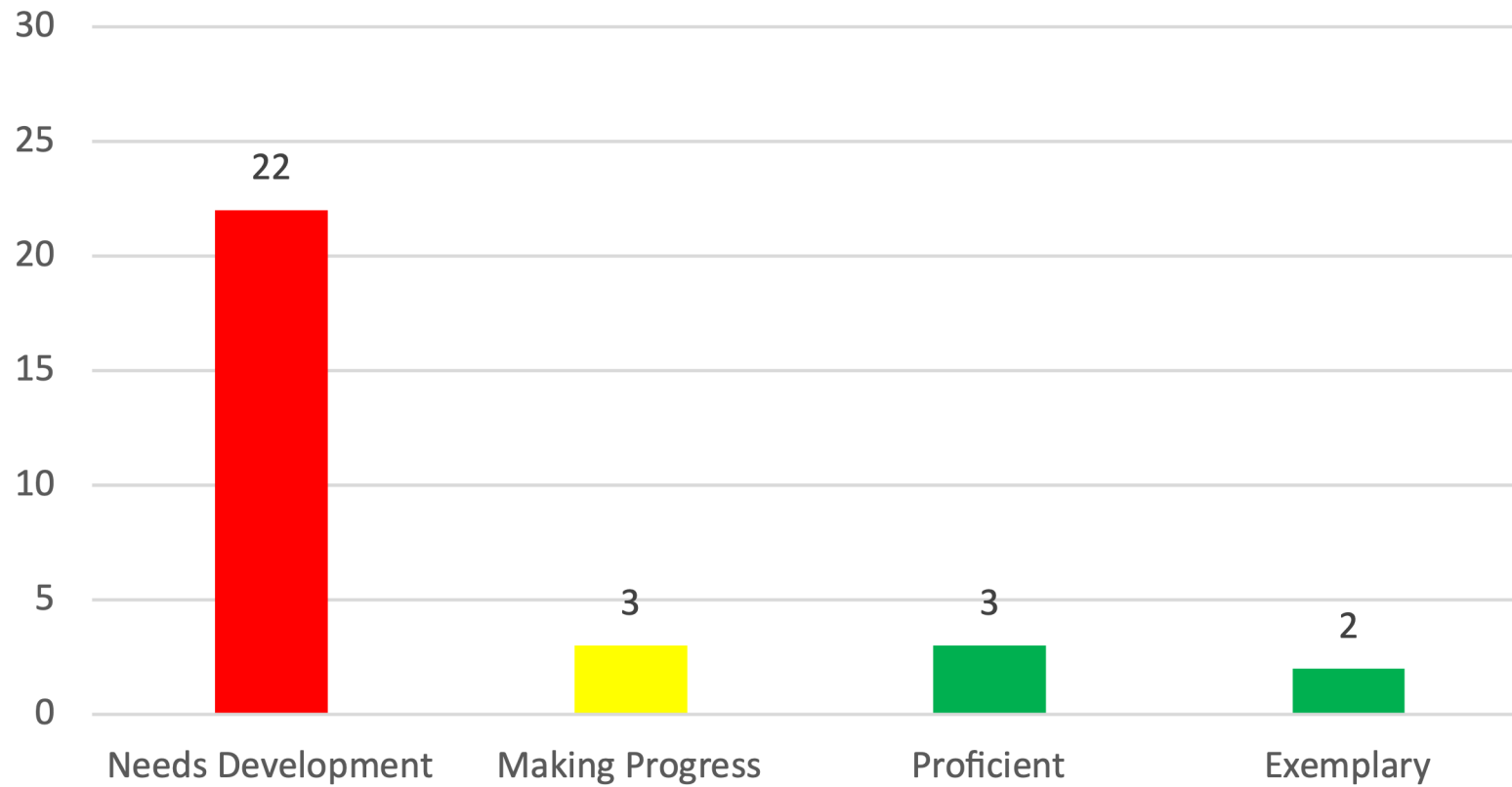
Write education articles for Eagle Times
& Granite Grok

Secretary and Founding Board Member,
SDGA of NH

Croydon School Board Meeting

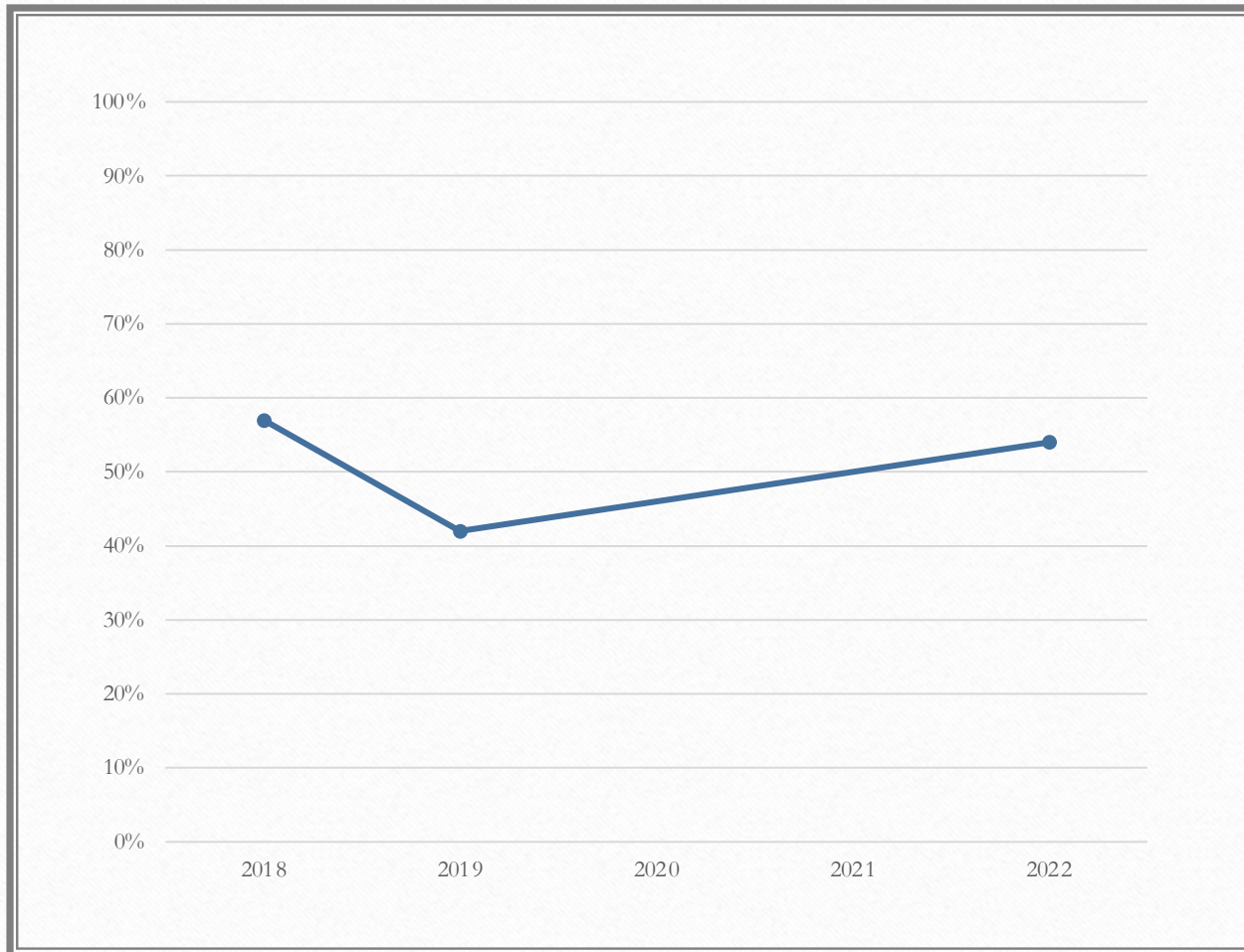
June 2023

2023 Fountas & Pinnell Reading



The Reasons

- Kindergarten students don't start out prepared to learn to read.
- They don't know how to teach reading.
- COVID



Croydon NH SAS Reading

What We'll Cover

- ~2016-2023 Scores
 - NH SAS (State test)
 - SAT (State-level results)
- 1998-2022 NAEP (National test)

NH State Assessment System (NH SAS)

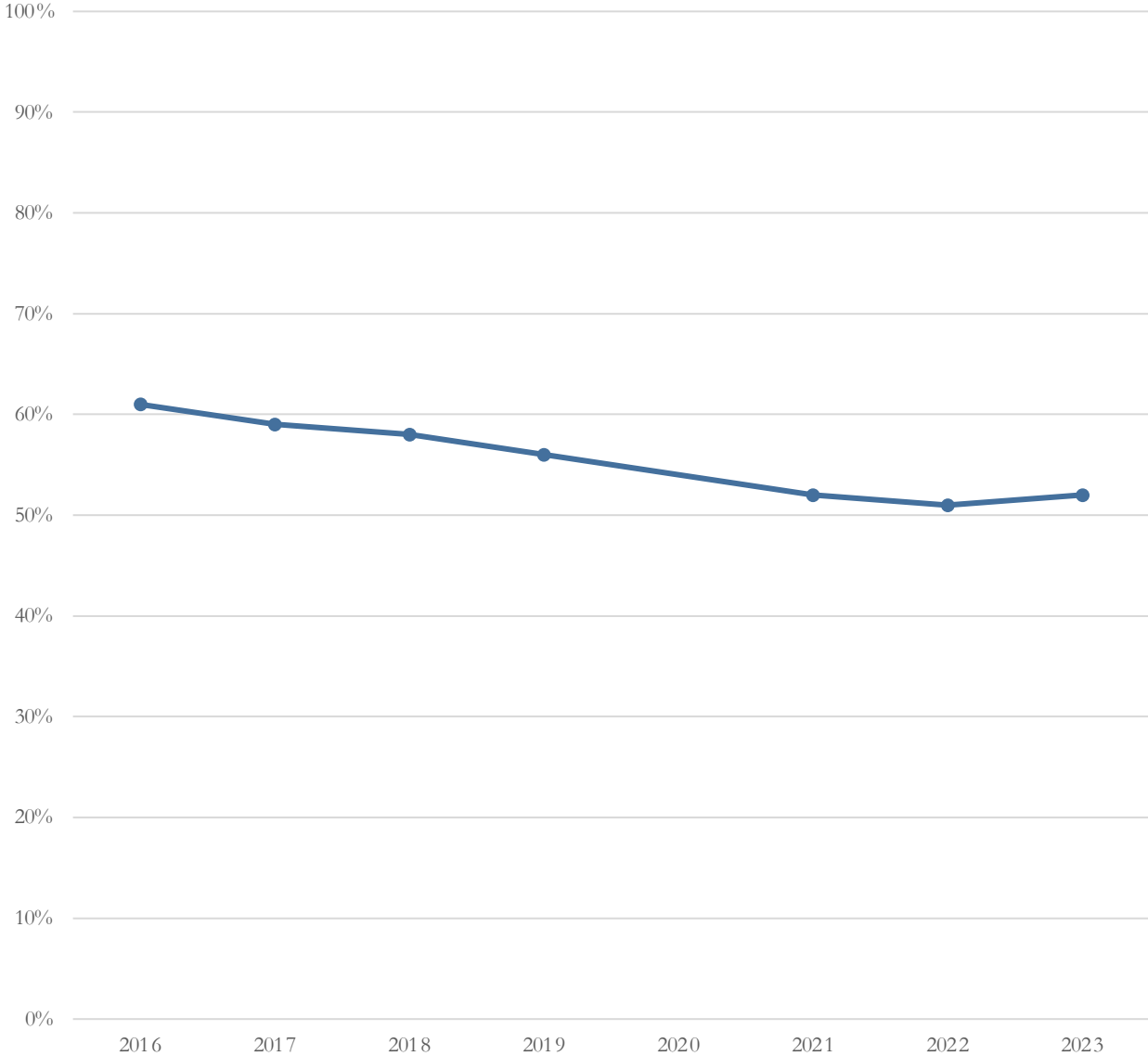
- Traditional public and charter schools
- Grades 3-8
- Grade 11 (SAT)

RSA 193-H:2 – Statewide Performance Targets

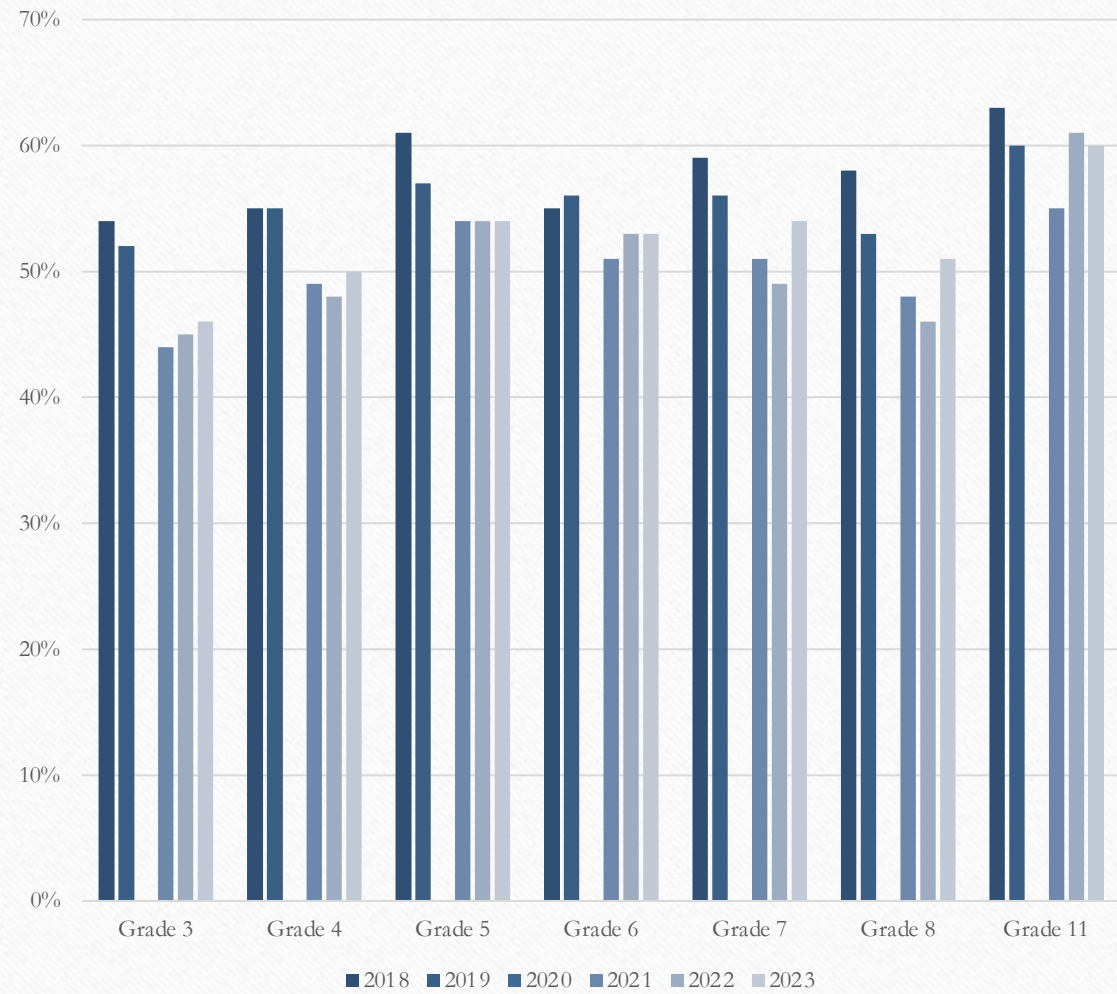
- Requires public schools to have:

"all pupils at the proficient level or above on the statewide assessment"

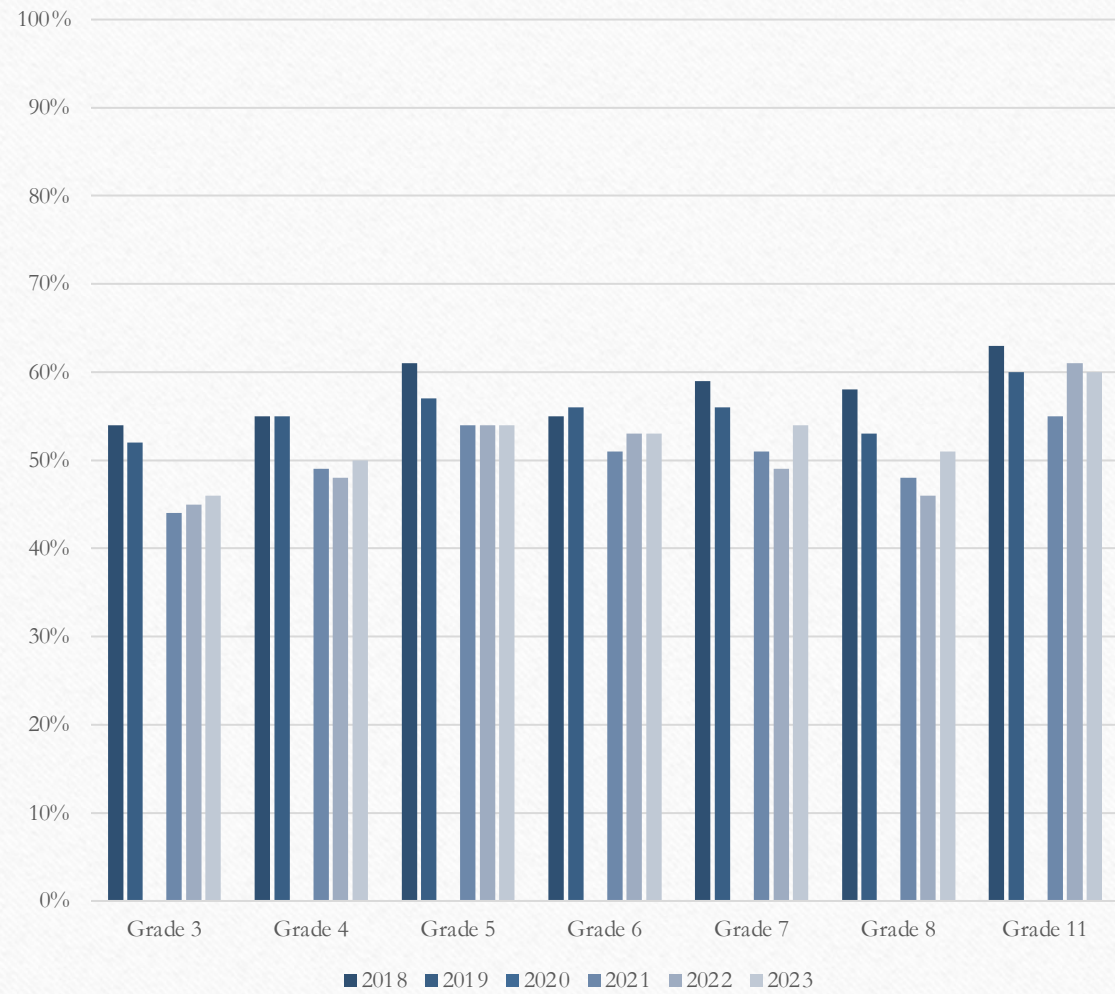
NH SAS State-Level Reading Scores 2016-2023



Grade Performance

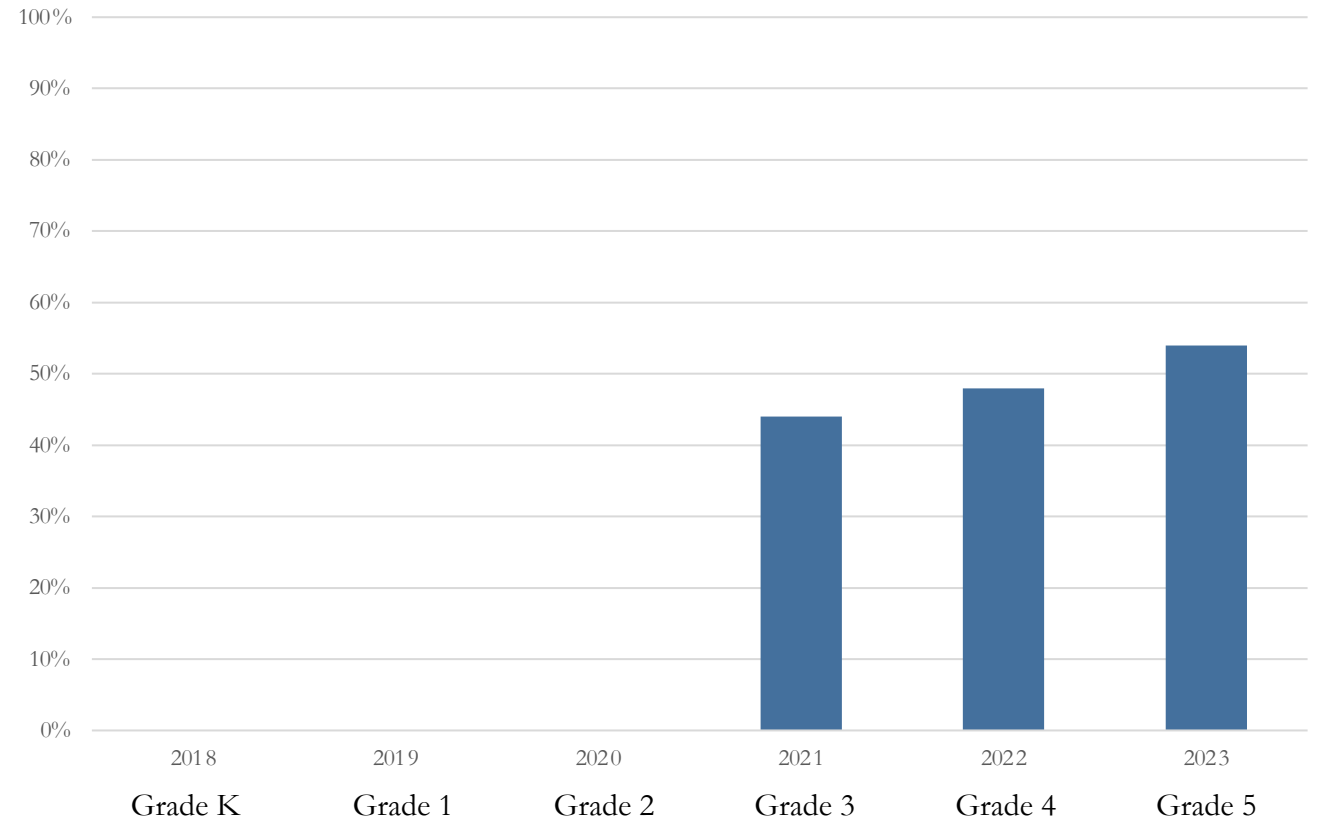


Grade Performance



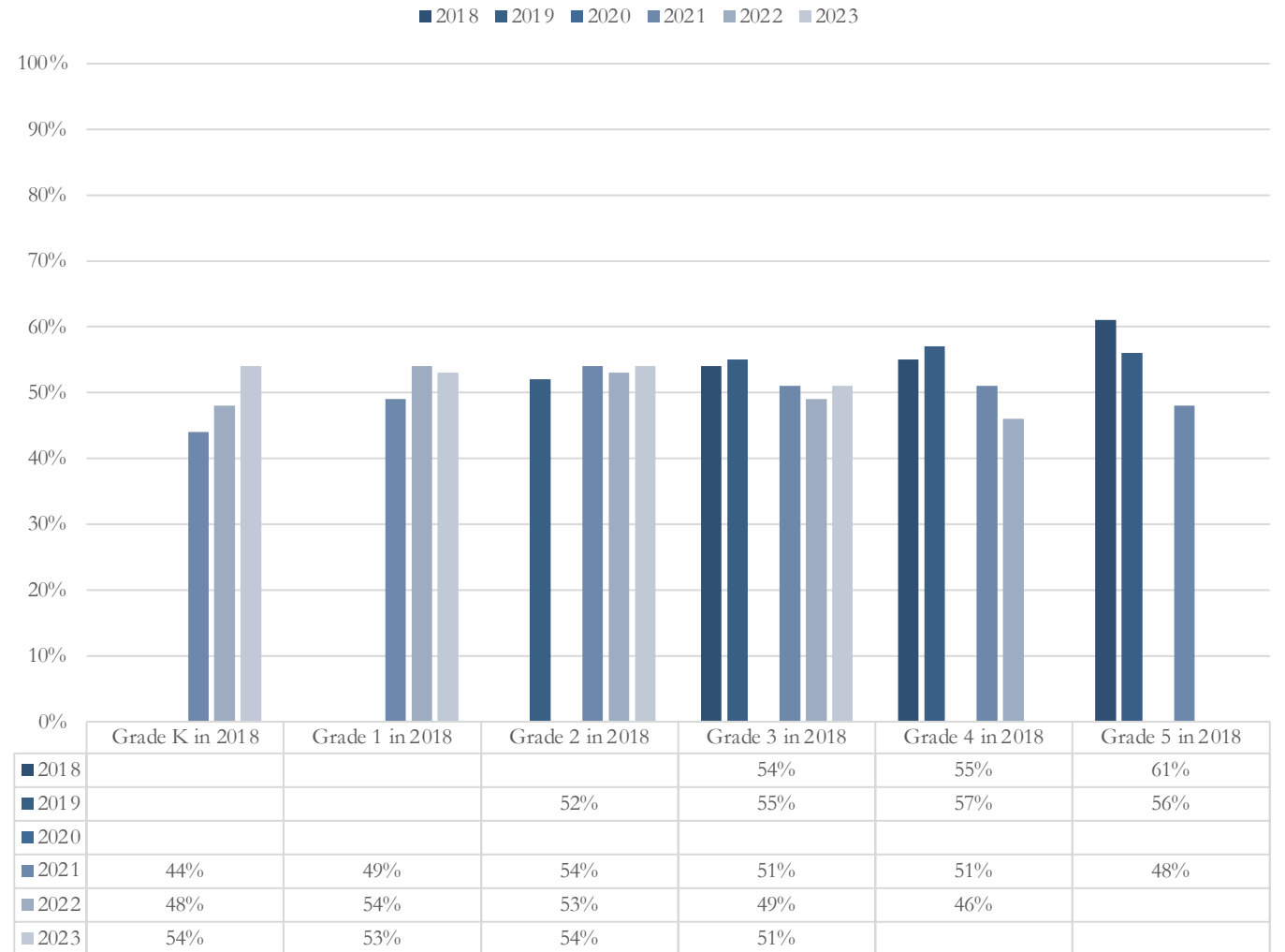
Kindergarten
2018
Group
Progression

NH SAS
Reading Scores



Reading Group Progression

NH Reading Group Progression



NAEP: The Nation's Report Card

- National Assessment of Educational Progress
- Since 1969
- Federal department of education
- Tests for students in grades 4 and 8
- Sampling of students in each state and large district
- No student takes the entire test

NAEP Reading Scores for NH

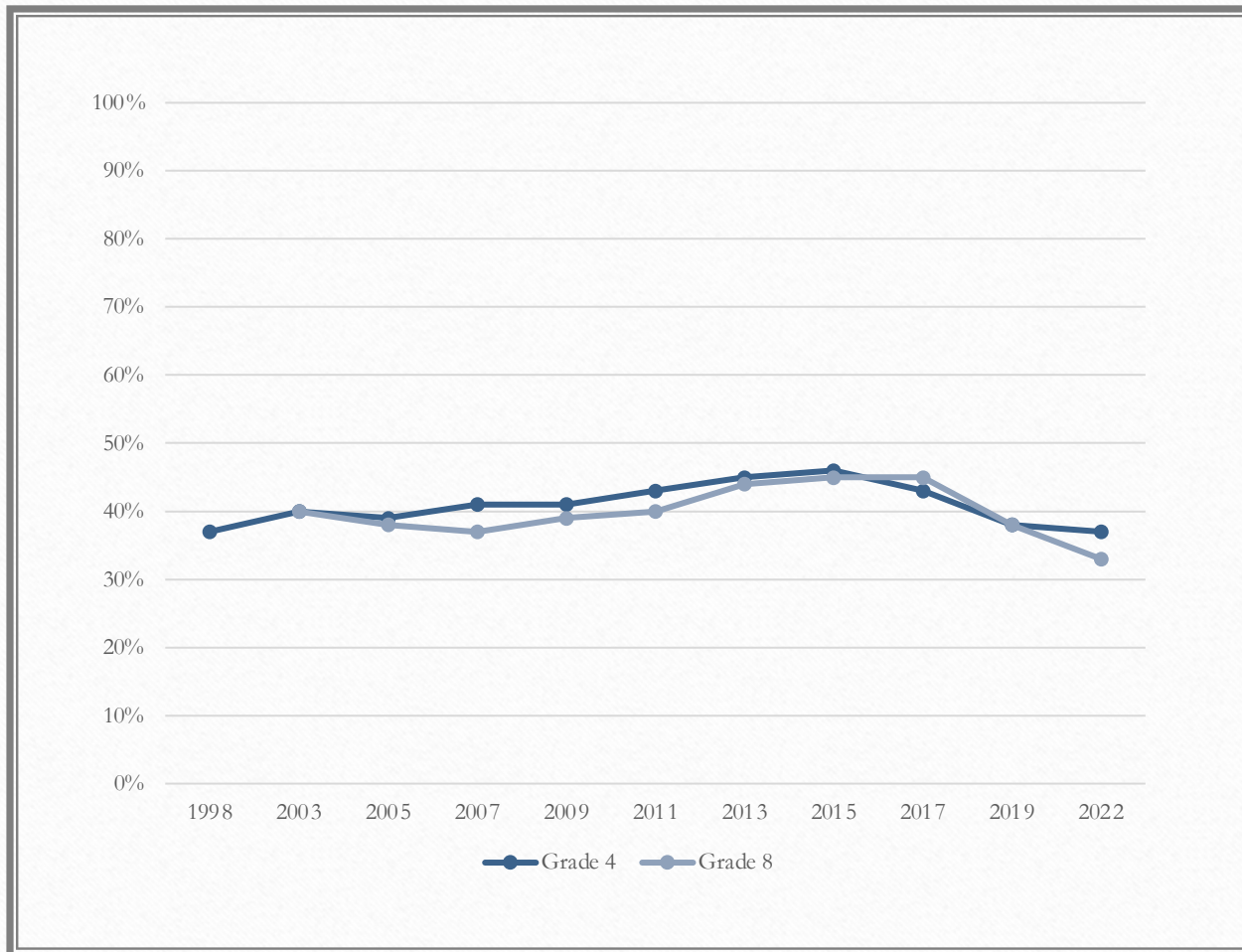
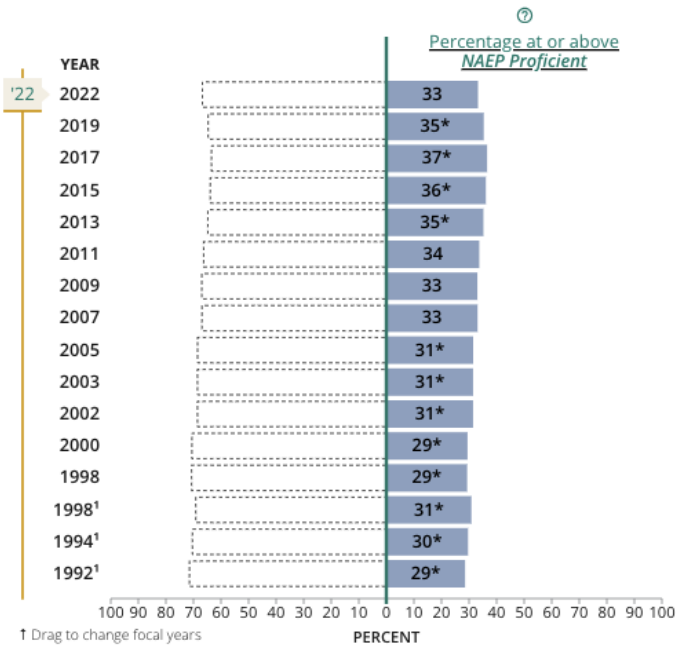


FIGURE | Trend in fourth-grade NAEP reading achievement-level results

DISPLAY AS **GRAPH** TABLE

[Download graph](#)

BASELINE [NAEP BASIC](#) **NAEP PROFICIENT** [Show achievement-level breakdown](#)



- * Significantly different ($p < .05$) from 2022.
- 1 Accommodations not permitted.

NOTE: NAEP achievement levels are to be used on a trial basis and should be interpreted and used with caution.

NAEP National Grade 4

Percent at or above
proficient

NAEP State-Level Reading

Grade 4 2022

FOCAL JURISDICTION

Nation (public)

32

STATES/JURISDICTIONS WHERE PERCENTAGE AT OR ABOVE NAEP PROFICIENT IS HIGHER THAN THE NATION (PUBLIC)



STATES/JURISDICTIONS WHERE PERCENTAGE AT OR ABOVE NAEP PROFICIENT IS NOT SIGNIFICANTLY DIFFERENT FROM THE NATION (PUBLIC)



FIGURE | Trend in eighth-grade NAEP reading achievement-level results

DISPLAY AS **GRAPH**

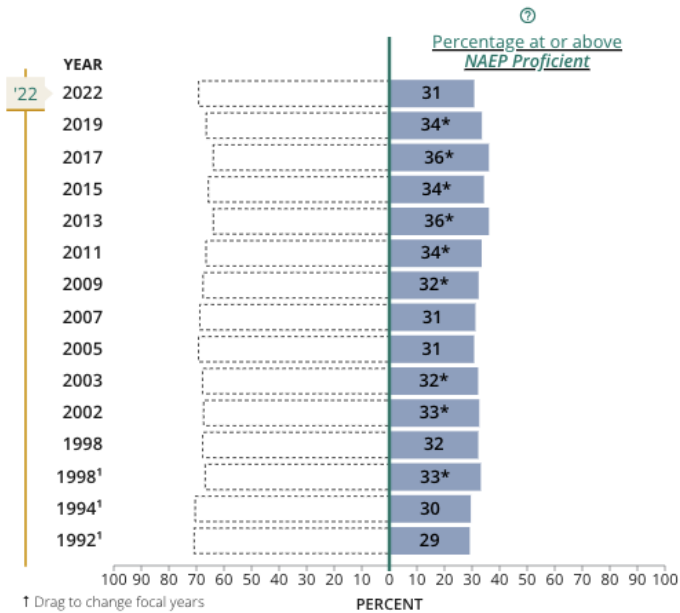
TABLE

[Download graph](#)

BASELINE [NAEP BASIC](#)

NAEP PROFICIENT

[Show achievement-level breakdown](#)



* Significantly different ($p < .05$) from 2022.

1 Accommodations not permitted.

NOTE: NAEP achievement levels are to be used on a trial basis and should be interpreted and used with caution.

NAEP National Grade 8

Percent at or above
proficient

NAEP State-Level Reading

Grade 8 2022

FOCAL JURISDICTION

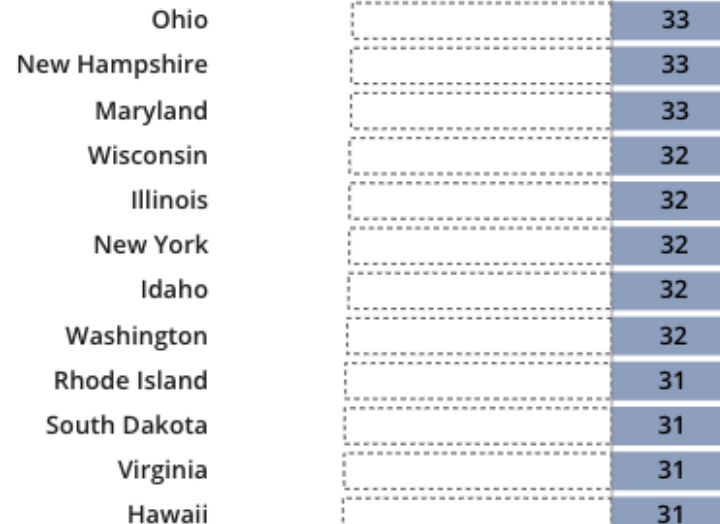
Nation (public)

29

STATES/JURISDICTIONS WHERE PERCENTAGE AT OR ABOVE NAEP PROFICIENT IS HIGHER THAN THE NATION (PUBLIC)



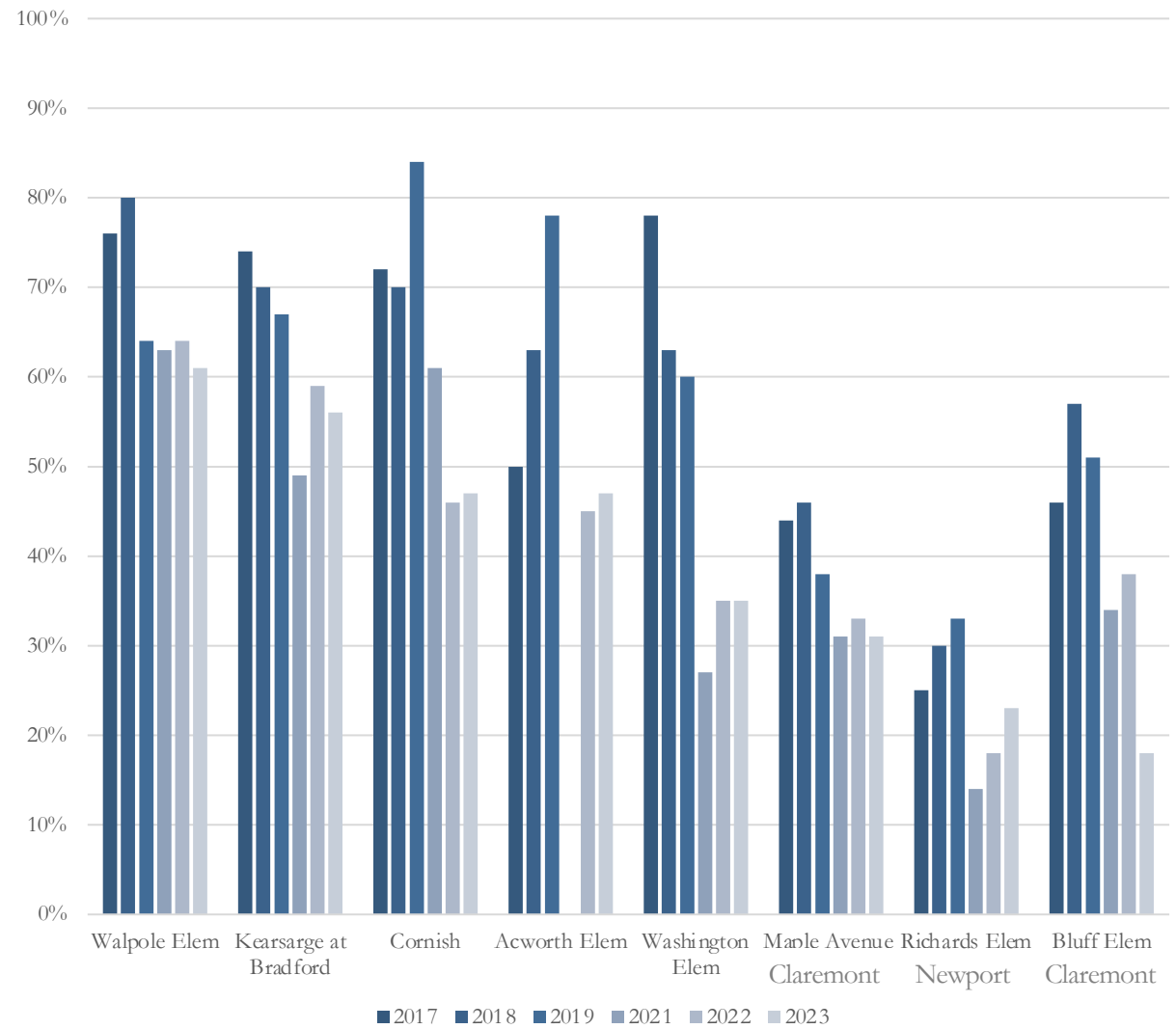
STATES/JURISDICTIONS WHERE PERCENTAGE AT OR ABOVE NAEP PROFICIENT IS NOT SIGNIFICANTLY DIFFERENT FROM THE NATION (PUBLIC)



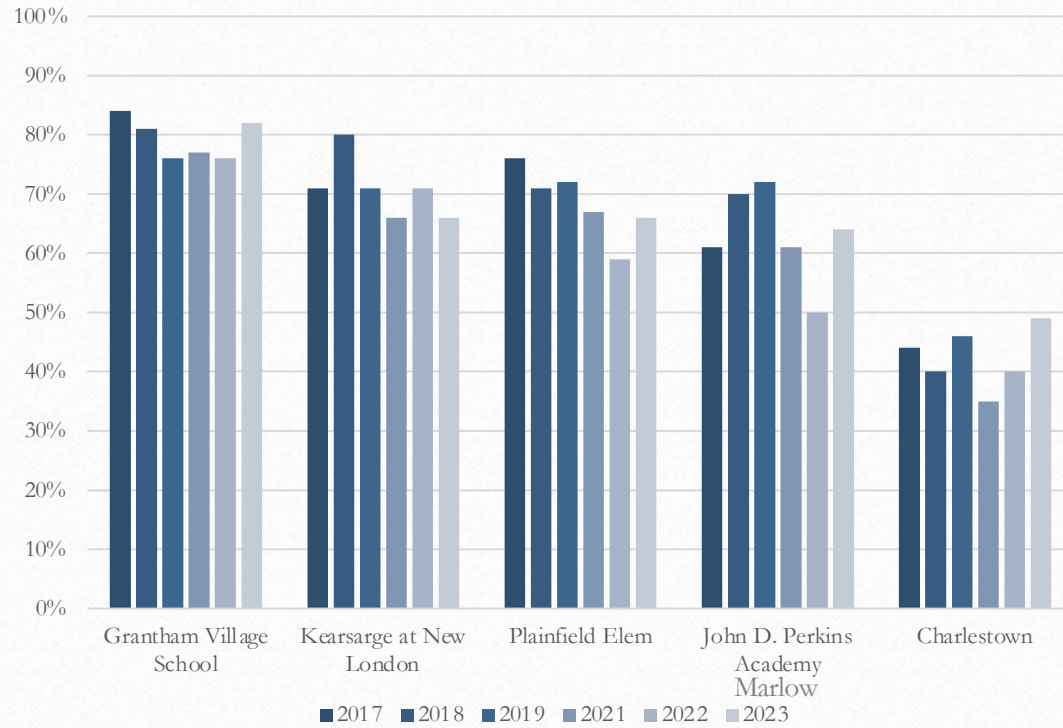
Elementary School Results

- Eagle Times distribution area
- 20 Elementary schools
- Three categories relative to 2020:
 - Scores Drop (8 schools)
 - Scores Maintain (5 schools)
 - Scores Return (7 schools)

Scores Drop for 8 Elementary Schools

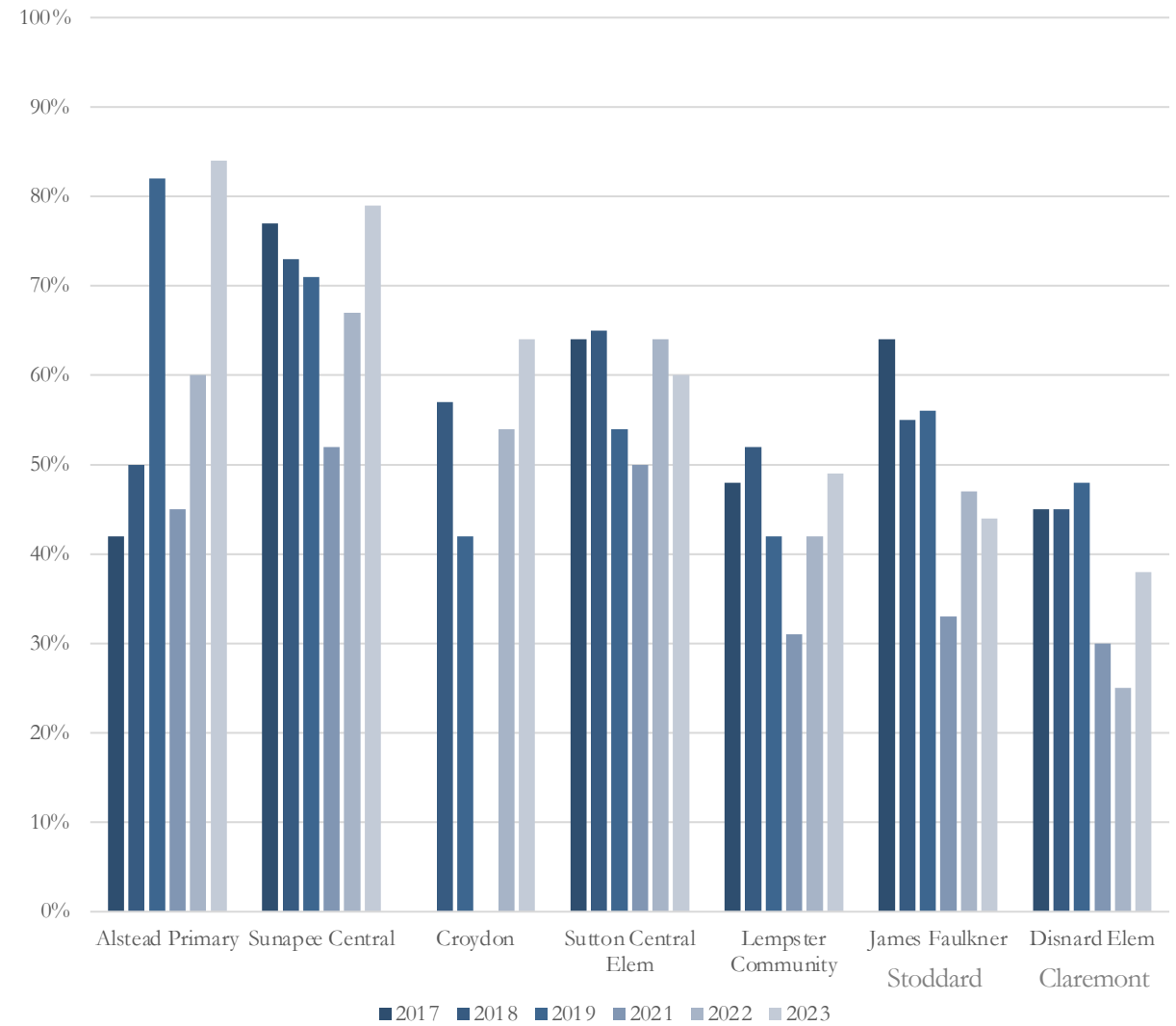


5 Elementary Schools: Scores Maintain



Scores
Maintain for
5 Schools

Scores Return for 7 Schools



Summary

- Drops mostly happened before the pandemic shutdowns
- Students have been performing poorly for a very long time

Conclusion

- Need to focus on reading in the early grades
- Something major needs to change

Questions?

Contact info:

Jody Underwood

jodysun@gmail.com

sdganh.org